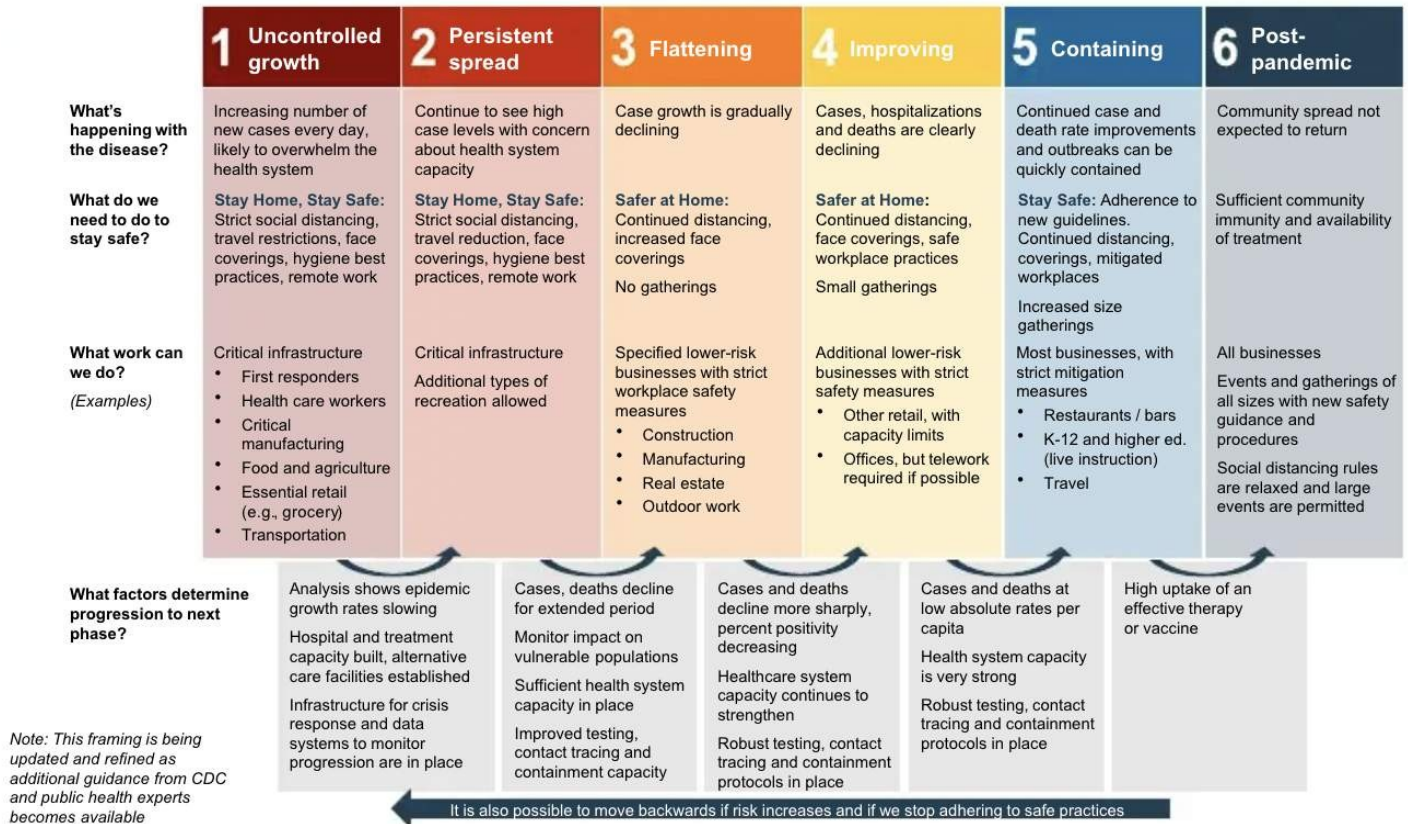


MI Safe Start & St. Vladimir Parish Plan



Our St. Vladimir Parish Plan will mirror the State of Michigan plan (above) since this is how the vast majority of Michigan citizens will understand the pandemic and quarantine situation in our state.

1. St. Vladimir's Closed to Public Services, Divine Services Continue and are streamed live for the edification of the parish family. Clergy commune faithful at home or in the hospital on an emergency basis only, following best practices of hand washing, physical distancing, and masking.
2. St. Vladimir's Closed to Public Services, Divine Services Continue and are streamed live for the edification of the parish family. Clergy commune faithful at home or in the hospital on a case by case basis, but still only in essentially critical situations only, following best practices of hand washing, physical distancing, and masking.
3. St. Vladimir's Closed to Public Services, Divine Services Continue and are streamed live for the edification of the parish family. Clergy commune faithful at home or in the hospital following best practices of hand washing, physical distancing, and masking. Preparations are made for public services to be held again in step 4.
4. **PRESENT STATE AS OF 5/24/20:** Public services are held strictly following guidelines provided by state and federal Public Health professionals.
 - Indoor & Outdoor Services:
 - 6 foot square area per group of 4 (from a single family or household – multiple households may not combine to form a group of 4)* - STRICTLY ENFORCED. Markings will be placed on the floor inside (on the ground outside) marking clearly where to stand
 - Masks/face coverings (cover mouth and nose) required for all: clergy, choir, faithful. Exceptions: children <2 (those who cannot mask for medical reasons should remain at home). There will be no other exceptions for any reason.

- Faithful must bring their own masks/face coverings. Those who cannot acquire a mask should contact Fr. Gregory. Cloth variants of masks are encouraged. Medical grade masks should be donated to front line staff.
- Sign up sheet for all Divine Services. Must sign up ahead of services to enter church. Checked at entry screening
- Parish council families and clergy families seek to avoid Sunday Divine Liturgies in favor of weekdays to allow the maximum number of the faithful to attend on Sundays
- Bathrooms must be cleaned after each use. Clorox Wipes or other similar product will be available. Parents are responsible for cleaning after their children
- Overflow space outside (masks required). Must sign up ahead of services for overflow space. Must specify preference to commune outside at signup. Communion will take place just outside the front doors of the church for those in overflow space.
- All screened before entering church or overflow space for disease symptoms and recent exposure to disease symptoms
- Hands washed/sanitized at entry and exit
- Hand sanitizer widely available throughout church/overflow space
- The faithful are requested be conscious of physical distancing when venerating icons, lighting candles, lining up for Communion, or at other similar times when moving from one's place
- Social/physical distancing before, during, or after services between household groups is required
- Children must remain with their household group throughout the Divine Services. There are no exceptions to this rule.
- No other parish activities besides Divine Services

5. Public services are held strictly following guidelines provided by state and federal Public Health professionals.

○ Indoor Services:

- 6 foot square area per group of 4 (from a single family or household – multiple households may not combine to form a group of 4)* - STRICTLY ENFORCED. Markings will be placed on the floor inside (on the ground outside) marking clearly where to stand
- Masks/face coverings (cover mouth and nose) required for all: clergy, choir, faithful. Exceptions: children <2, those who cannot mask for medical reasons. There will be no other exceptions for any reason.
- Faithful must bring their own masks/face coverings. Those who cannot acquire a mask should contact Fr. Gregory. Cloth variants of masks are encouraged. Medical grade masks should be donated to front line staff.
- Sign up sheet for all Divine Services. Must sign up ahead of services to enter church. Checked at entry screening
- Parish council families and clergy families seek to avoid Sunday Divine Liturgies in favor of weekdays to allow the maximum number of the faithful to attend on Sundays
- Bathrooms must be cleaned after each use. Clorox Wipes or other similar product will be available. Parents are responsible for cleaning after their children
- Overflow space outside (masks strongly recommended). Must sign up ahead of services for overflow space. Must specify preference to commune outside at signup. Communion will take place just outside the front doors of the church for those in overflow space.
- All screened before entering church or overflow space for disease symptoms and recent exposure to disease symptoms
- Hands washed/sanitized at entry and exit
- The faithful are requested be conscious of physical distancing when venerating icons, lighting candles, lining up for Communion, or at other similar times when moving from one's place
- Hand sanitizer widely available throughout church
- Physical distancing before, during, or after services between household groups is required. Socialization should be limited, and should follow physical distancing best practices.
- Children must remain with their household group throughout the Divine Services. There are no exceptions to this rule.

- No other parish activities besides Divine Services
 - Outdoor Services:
 - 6 foot square area per group of 4 (from a single family or household – multiple households may not combine to form a group of 4)* - STRICTLY ENFORCED. Markings will be placed on the floor inside (on the ground outside) marking clearly where to stand
 - Masks/face coverings (cover mouth and nose) strongly recommended for all.
 - Sign up sheet for all Divine Services. Must sign up ahead of services to enter worship area. Checked at entry screening
 - Parish council families and clergy families seek to avoid Sunday Divine Liturgies in favor of weekdays to allow the maximum number of the faithful to attend on Sundays
 - Bathrooms must be cleaned after each use. Clorox Wipes or other similar product will be available. Parents are responsible for cleaning after their children
 - All screened before entering worship area for disease symptoms and recent exposure to disease symptoms
 - Hands washed/sanitized at entry and exit
 - Hand sanitizer widely available throughout worship area
 - The faithful are requested be conscious of physical distancing when venerating icons, lighting candles, lining up for Communion, or at other similar times when moving from one's place
 - Physical distancing before, during, or after services between household groups is required. Socialization should be limited, and should follow physical distancing best practices.
 - Children must remain with their household group throughout the Divine Services. There are no exceptions to this rule.
 - No other parish activities besides Divine Services
6. Divine Services and all parish activities resume according to the pre-pandemic schedule. No limitations on attendance or activities.

General Information Levels 1-5

- The maximum number of Liturgies possible per week will be served
- Clergy are broken into groups that do not serve together to minimize the change that both priests are sick at the same time
- As a rule, two Liturgies are served on Sundays and feast days
- During the time of pandemic the faithful are not obligated to kiss a priest's hand when receiving a blessing.
- During the time of pandemic the faithful should not feel that they must kiss public icons. At the same time, we should keep in mind that all icons are miraculous, and that many martyrs died in the struggle with iconoclasm and that we, as Orthodox Christians hold icons in high esteem. Each of the faithful may decide, during this time of pandemic, how best to approach this question.
- Masks should be removed immediately before partaking of Communion and replace after partaking of the bread (wine is not available during the pandemic) following Communion.
- Partaking of the bread after Communion is obligatory, just as is the case outside of a pandemic.
- As in the case of the Presanctified Liturgy, the Cross is not presented for veneration at the end of the Liturgy
- Antidor is presented at the end of the Divine Liturgy. Antidor is prepared for the faithful with gloved hands, and the priest will distribute it with a gloved hand
- Confession takes place in the following manner:
 - Email or text message confessions are preferred
 - If the confession will be face to face both the priest and the penitent wear masks. The penitent prepares a written confession and hands it to the priest. The priest calls the penitent to the confessional after he has read the written confession. A short conversation may be held. The priest reads the prayer of absolution as usual.

*For example, if your family consists of 7 members you would need to break up into two groups: one of 4 and one of 3. Not more than 4 people can stand together in any one 6 foot square area and those people can come from only one household.